

USER MANUAL

Flow range

Model Number:

DAUF-16.64DBH
DAUF-41.146DBH
DAUF-41.146DOP.TO

Dear customer,

Thank you for buying this appliance and putting your trust in Dunavox. We have designed this product with the greatest care and hope it will be proud and long-term addition to your house. If you have any questions about your appliance, please let us know; we are happy to help you!

ABOUT THIS DOCUMENT

This manual is applicable to DAUF-8.23 from Dunavox. Read and understand this manual before using the product. Carefully store this manual for future reference.

We reserve the right to change the parameters without prior notice.

This manual is originally written in English. All other languages are translations of the original manual.

1. CONFORMITY

LV 2014/35/EU

EMC 2014/30/EU

ERP 2009/125/EC

RoHS 2011/65/EU and (EU) 2015/863

CB

2. SAFETY

Intended use:

This appliance is intended for storing wines at their optimal temperature. This appliance is intended to be built in.

The appliance is intended for use in household environments for typical housekeeping functions that may also be used by non-expert users for typical housekeeping functions, such as: shops, offices other similar working environments, farmhouses, by clients in hotels, motels, and other residential type environments and/or in bed and breakfast type environments.

The appliance is for indoor use only.

This appliance is intended to be used for the storage of wine.

Intended users:

This appliance can be used by children aged from 8 years and above and persons with reduced physical, sensory or mental capabilities or lack of experience and knowledge if they have been given supervision or instruction concerning use of the product in a safe way and understand the hazards involved. Children shall not play with the product. Cleaning and user maintenance shall not be done by children without supervision.

DISPOSAL OF OLD APPLIANCES

Before disposing of an old appliance remove any plugs and power leads to ensure that the appliance is inoperative.

Remove the door but leave the shelves in place to prevent children climbing inside.



This symbol on the product indicates that it must not be discarded as general household waste. Instead, it should be handed over to the applicable collection point for the recycling of electrical and electronic equipment. Disposal must be carried out in accordance with local environmental regulations for waste disposal.

By disposing of this product correctly you will help prevent potential negative consequences for the environment and human health, which would otherwise be caused by inappropriate waste handling of this product.

Warning: When disposing of an old appliance make sure that the pipe work does not become damaged.

BEFORE INSTALLING AND USING YOUR NEW APPLIANCE

Warning: Before powering up the appliance, please open the door for 5 minutes to ventilate the cabinet. Read through the instructions supplied with the appliance – failure to install or use this appliance in accordance with the instruction book may invalidate any warranty.

The manufacturer does not accept any liability for damage caused through improper use, or incorrect installation.

Do not install this appliance if it has been damaged during transportation. This includes the plug and supply cord.

Please keep these instructions in a safe place for future reference.

Note: This appliance is intended to be used exclusively for the storage of wine.

IMPORTANT SAFETY INSTRUCTIONS

- To prevent damage to the door and door gasket, make sure the door is fully opened before pulling out any shelves.
- Do not move the wine cooler when it is loaded with wine, you might distort the appliance.
- If the power lead becomes damaged it should only be replaced by the manufacturer or a suitably qualified person.
- Never allow children to operate, play with, or crawl inside the appliance.
- Never clean appliance parts with flammable fluids.
- Do not store or use gasoline or any other flammable vapours and liquids in the vicinity of this or any other appliance. This can create a fire hazard or explosion.
- **Warning:** Do not allow the refrigerant circuit to become damaged while using or installing the appliance. Should it become damaged, do not use the appliance until you are instructed to do so by a service engineer. Refrigerant can ignite or cause damage to the eye when leaking.
- Always remember to unplug the appliance before cleaning. When disconnecting from the electricity supply, pull the plug, not the power cord.
- Do not use anything electrical inside the Wine Cabinet.
- All electrical repairs must be carried out by a qualified service engineer. Inadequate repairs may result in a major source of danger for the user and invalidate any warranty.
- Never store anything dangerous inside the appliance, such as combustibles, explosives, strong acid or alkali etc.
- Always keep any ventilation openings clear of obstruction. Should they become blocked, clear them straight away.
- Make sure that the plug is in an accessible place when installation is complete.
- Only use this appliance for domestic purposes in accordance with these instructions.
- The wine cooler is suitable for storing wine (or other bottled beverages). It is not suitable for storing fresh or frozen foods.
- This appliance can be used by children aged from 8 years and above and persons with reduced physical, sensory or mental capabilities or lack of experience and knowledge if they have been given supervision or instruction concerning use of the appliance in a safe way and understand the hazards involved. Children shall not play with the appliance. Cleaning and user maintenance shall not be made by children without supervision.
- If the refrigerant of these appliances is R600a, Flammable and explosive articles should not be put in or near the cabinet, to avoid the fire or explode caused.



INSTALLATION INSTRUCTIONS

➤ **Before Using Your Wine Chiller**

- Remove the exterior and interior packing.
- This appliance is designed to be a built-in installation.
- This appliance is intended to be used exclusively for the storage of wine
- Before connecting the Wine Cooler to the power source, let it stand upright for approximately 24 hours. This will reduce the possibility of a malfunction in the cooling system from handling during transportation.
- Clean the interior surface with lukewarm water using a soft cloth.
- This appliance is intended to be used in households and similar applications.
- When disposing your appliance, please choose an authorized disposal site.
- Install the handle on the door.
- Place your wine cooler on a floor that is strong enough to support it when it is fully loaded. To level your wine cooler, adjust the front and rear levelling feet.
- Locate the wine cooler away from direct sunlight and sources of heat (**oven**, stove, heater, radiator, etc.). Direct sunlight may affect the acrylic coating and heat sources may increase electrical consumption. Extreme cold ambient temperatures may also cause the unit not to perform properly.
- This appliance is using flammability refrigerant. So never damage the cooling pipework during transportation.
- The wine cooler should be positioned where the ambient temperature is between 10°C and 30°C. If the ambient temperature is above or below this range, the performance of the unit may be affected. Placing the appliance in extreme cold or hot conditions may cause interior temperatures to fluctuate. The range of setting temperatures may not be reached.
- Plug the wine cooler into an appropriate socket. Should the plugs require changing, use the instructions given in the Electrical Requirements section.
- Switch off the fuse of the power outlet before connecting the appliance to the mains.
- Connect the appliance to an earthed socket. Do not connect the appliance to a faulty power outlet.
- Switch off the fuse of the power outlet before performing maintenance.
- Do not connect the appliance to a power outlet when the power cord is damaged.
- Keep the appliance and the power cord away from water or moisture.

Note: The ventilation cannot work properly when the ventilation grille is covered. The appliance can overheat.

Do not cover the ventilation grille.

Note: Always fix the appliance to the cabinet.

Note: Storing opened bottles on the shelves can cause leakage and mold in the wine cooler. Do not store bottles that have been opened.

Important: If the lowest temperature is set during periods of high humidity and ambient temperature, condensation may appear on outside surfaces and the door of wine cellar, this is a normal phenomenon.

➤ **Attention**

- Store wine in sealed bottles;
- Do not overload the cabinet;
- Do not open the door unless necessary;
- Do not cover shelves with aluminum foil or any other shelf material which may prevent air circulation;
- Should the wine cooler be stored without use for long periods it is suggested, after a careful cleaning, to leave the door open to allow air to circulate inside the cabinet in order to avoid possible formations of condensation, mold or odors.

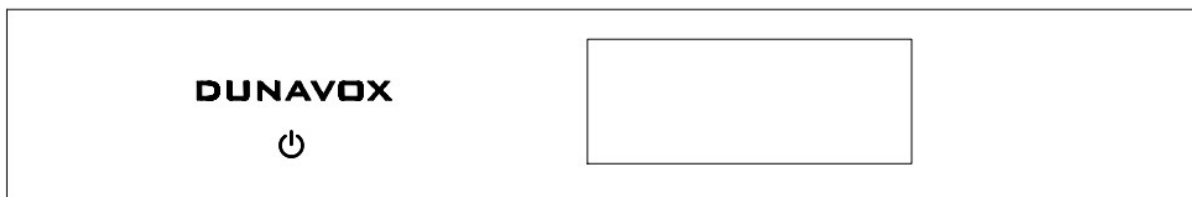
➤ **Ambient Room Temperature Limits**

This appliance is designed to operate at ambient temperatures specified by its temperature class marked on the rating plate.

Class	Symbol	Ambient Temperatures range(°C)
Temperate	N	+ 16 to + 32
Subtropical	ST	+ 16 to + 38

OPERATING YOUR WINE CELLAR

➤ The controls of your wine Cooler



Power ON/OFF button

The system default power ON after plug in.

Long press this button 3 seconds, will have a beeping sound,the product power OFF.

Slightly press this button, will have a beeping sound,the product power ON.

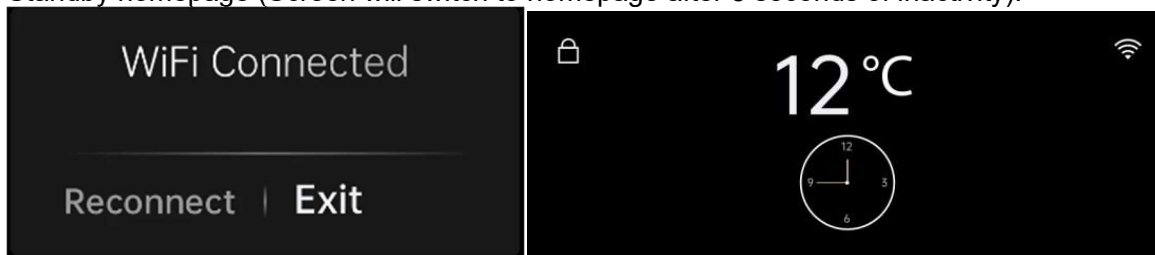
1.Language selection menu







First power up, the screen displays the language selection menu (English, Spanish,Italian,French,German,Dutch,Hungarian,Polish,Slovenian.Selected language will be saved and memorized e.g. unit should remember for the choice after a power breakout), after selecting the language,the screen will enter the homepage.

2.Homepage(Lock, WIFI)

Standby homepage (Screen will switch to homepage after 5 seconds of inactivity).



① Lock button :

In normal mode(non-fault), the system defaults unlock after power on product. Touch the  lock button on the upper left of the screen for 3 seconds, will have a beeping sound, the system enter lock mode to lock control panel and the lock button switch to , the system will have no action when touch the screen under lock mode .Touch the  lock button for 3 seconds, will have a beeping sound,the control panel unlock and the lock button switch to .



In fault mode (code or alarm), automatic unlocking.



② WIFI button: Touch the  button, the system will enter the wireless network connection page.(more

details please refer to the below WIFI connection steps)

3. Temperature setting page(Slide the screen to the left side once to enter this page)



 is for upper zone and  is for lower zone.

Touch the  button to decrease the temperature by one (1) degree. Touch the  button to increase the temperature by one (1) degree increments.

Temperature control range :

Upper zone : 5-10°C, Lower zone : 10-18°C

Factory default setting temperature:

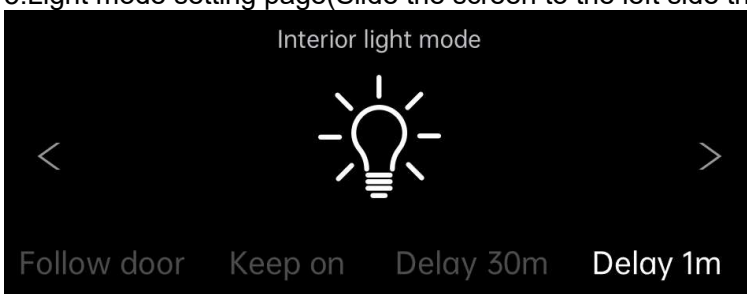
Upper zone : 6°C, Lower zone : 12°C

4. Operating mode setting page(Slide the screen to the left side twice to enter this page)



- ① Std(Standard mode): The system default “Std” mode after power on product.
- ② Eco(Energy-saving mode): After entering the Eco mode, the internal light will turn off after 3 seconds and the screen will go off 20 seconds after the door is closed.
- ③ Sab(Sabbath mode): After entering the Sab mode, the internal light and logo light will turn off. The screen will turn off in 15 seconds. When touching the screen again, screen will be in the “Operating mode setting page”. Choose the other mode and exit Sabbath mode. If there is no operation on the screen within 15 seconds, the screen will automatically turn off and keep on Sabbath mode.
- ④ Demo: After entering the Demo mode, the compressor will stop working.

5. Light mode setting page(Slide the screen to the left side three times to enter this page)



- ① Follow door: The internal light will turn on when the door is opened and will turn off when the door is closed.
- ② Keep on: The internal light is always on whether the door is closed or opened.
- ③ Delay 30m: The internal light will turn off 30 minutes after the door is closed.
- ④ Delay 1m: The internal light will turn off 1 minute after the door is closed.

6. Light brightness setting page (Slide the screen to the left side four times to enter this page)



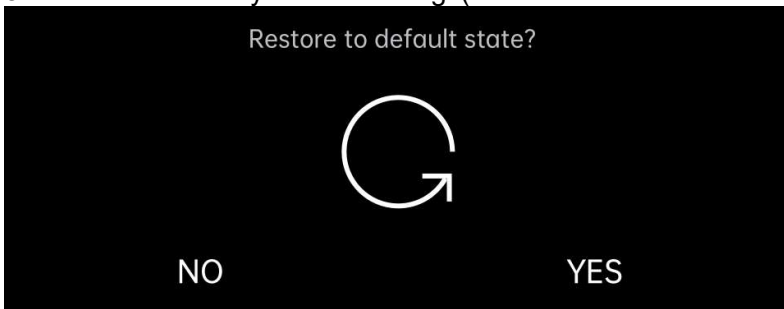
Choose the different internal light brightness by touching 50%, 75% and 100%.

7. Light color setting page (Slide the screen to the left side five times to enter this page)



There are 3 light colors to select, "White" "Blue" "Warm white", please touch the corresponding button to select the light color. (In the ECO mode, the light color can not be changed).

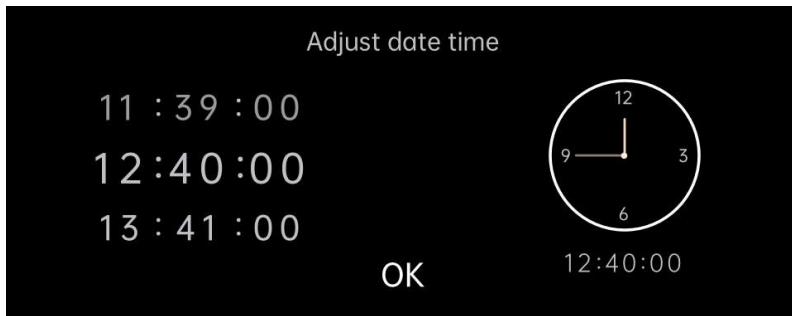
8. Restore the factory default settings (Slide the screen to the left side six times to enter this page)



Touch "NO", all the settings unchanged.

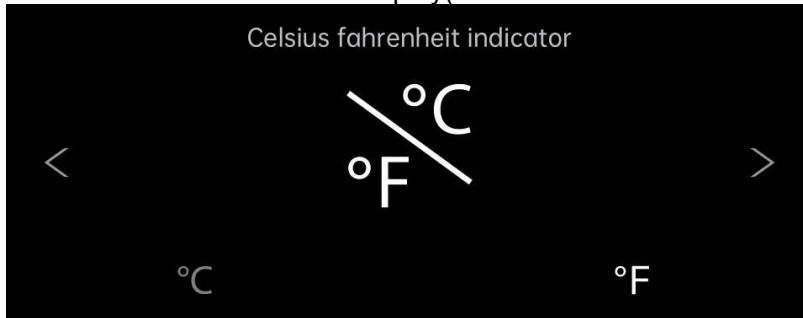
Touch "YES", restore the factory default settings, the interface will switch to the language selection menu.

9. Time setting page (Slide the screen to the left side seven times to enter this page)



Scroll up and down in the digital area to set the time, it can set the hour/minute/second, after the setting is complete, touch “OK” to confirm, the time on the index dial of the screen and homepage will update at the same time.

10. Choice between °C/F on display (Slide the screen to the left side eight times to enter this page)



Celsius and Fahrenheit switch:


Touch “°C” or “°F”, the corresponding symbol will bright, temperature display will switch between °C and °F.

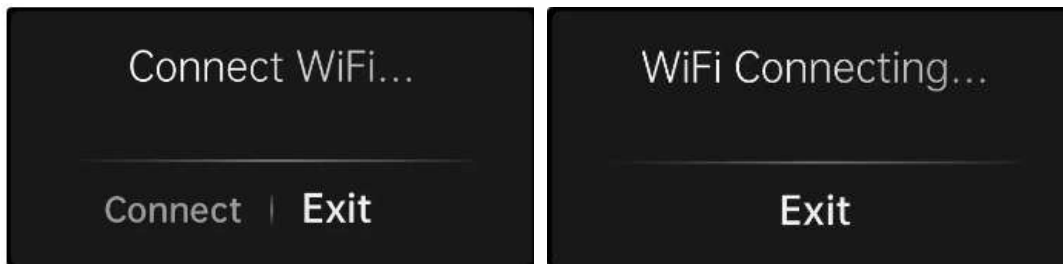
WIFI usage Steps:

1. Scan the code to download the “smart life” APP and install it on your phone.





2. Register a personal account and log into your home WIFI network.

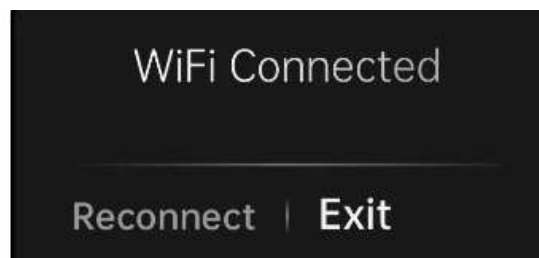
3. After connecting the power, enter the home page and touch the WIFI  button to enter the wireless network connection page, touch “Connect” and the system will enter into the network matching status.



4. Click "+" on the APP page to "Add Device". The APP will automatically searching the devices and attempts to connecting.

5. The device icon will popped up when APP success to searching the device. Click the icon and enter the WiFi password. Then waiting for the complete connecting.

6. After the network is success connecting. The interface will display the . The APP enter into the wine cooler control main window. You can use the APP now. if connection fail, the interface will display , please check the WIFI network and touch "Reconnect" to connect again.



Network Interface

1. Bluetooth (Bluetooth LE) interface: before the network allocation, the device will turn on the Bluetooth function by default and its main function is used for proximity device search and initial connection, when you are ready to network the device, mobile phones and other smart devices can quickly discover the device via Bluetooth and establish a preliminary communication link to prepare for the subsequent Wi-Fi networking process.

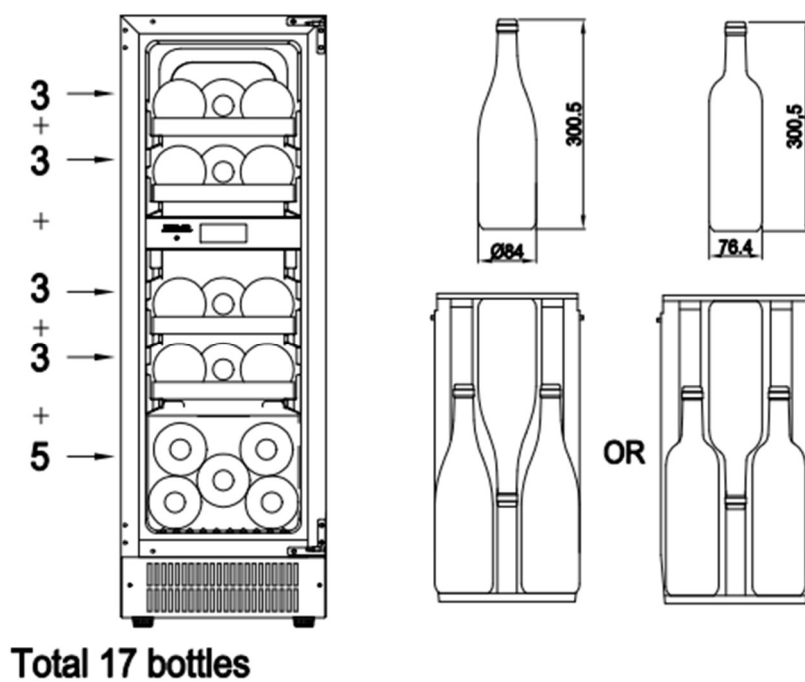
2. WiFi interface: Before network allocation, the Wi-Fi interface of device is not connected, but in configurable listening mode. It is always listening to the Wi-Fi signals in the surrounding environment and waiting for the user's command sent through the mobile app. Once it receives the correct assignment to connect to the specified Wi-Fi network. The device only supports Wi-Fi networks in the 2.4GHz band, which is more suitable for the stable connection to smart devices in the home enrolment Service.

3. Device broadcasting service: Device continuously broadcasts its own device information via Bluetooth, including device name, device type and unique identifier. The broadcast information will be received by the surrounding Bluetooth smart devices, so that users can quickly identify and select the equipment that needs to be connected to the network in the mobile phone APP.

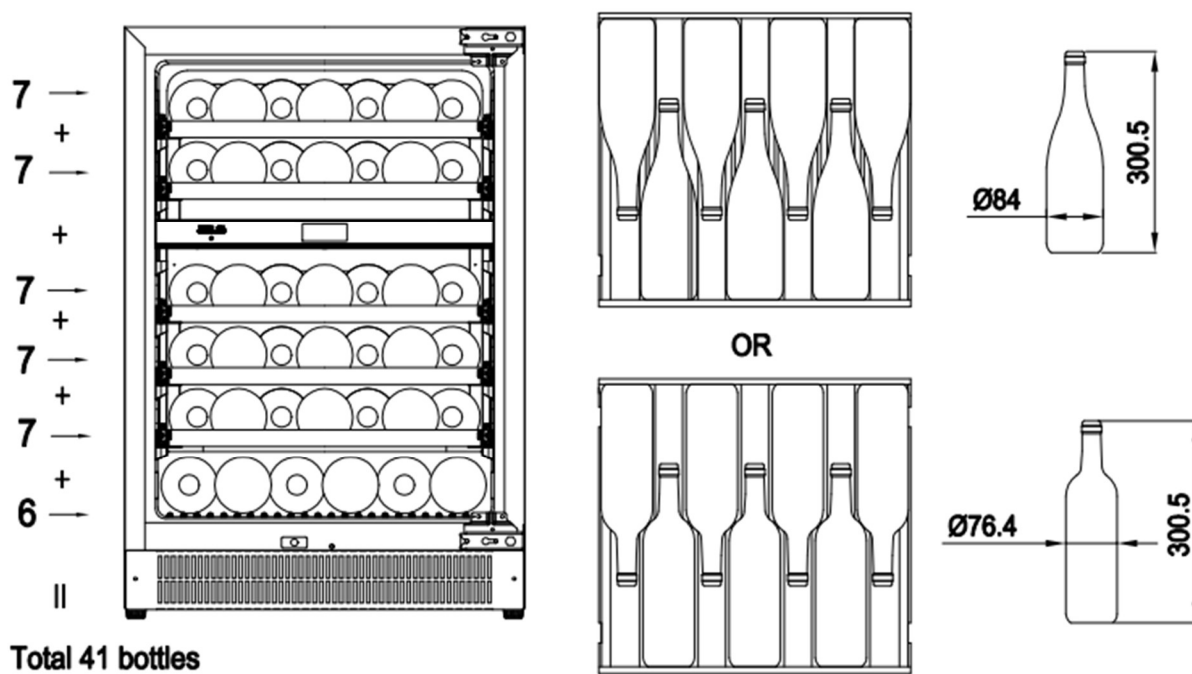
4. Networking service: Whether it is establishing initial connection with mobile phone APP via Bluetooth or subsequent network configuration via Wi-Fi, the device provides corresponding networking service. The router Wi-Fi network name (SSID) and password are transmitted from APP to the mobile phone APP via Bluetooth. During the Wi-Fi distribution process, the device will try to connect to the specified Wi-Fi network according to the received distribution information, and give feedback to the mobile phone APP about the progress and result of distribution.

➤ Storage diagram

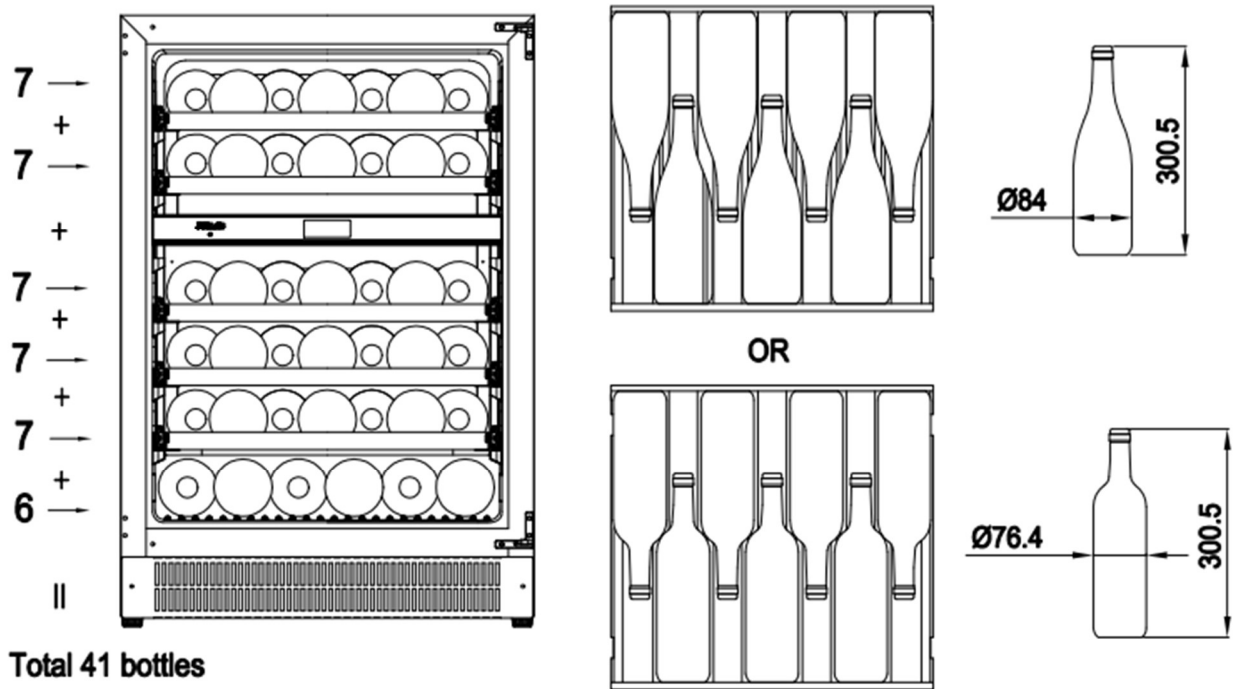
FOR DAUF-16.64DBH



FOR DAUF-41.146DOP.TO

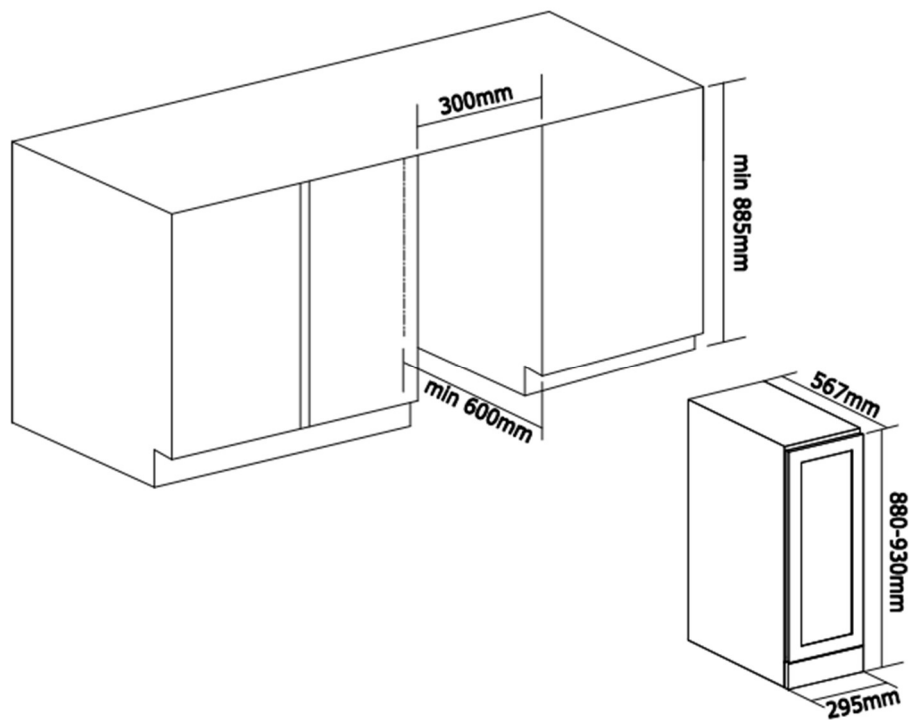


FOR DAUF-41.146DBH

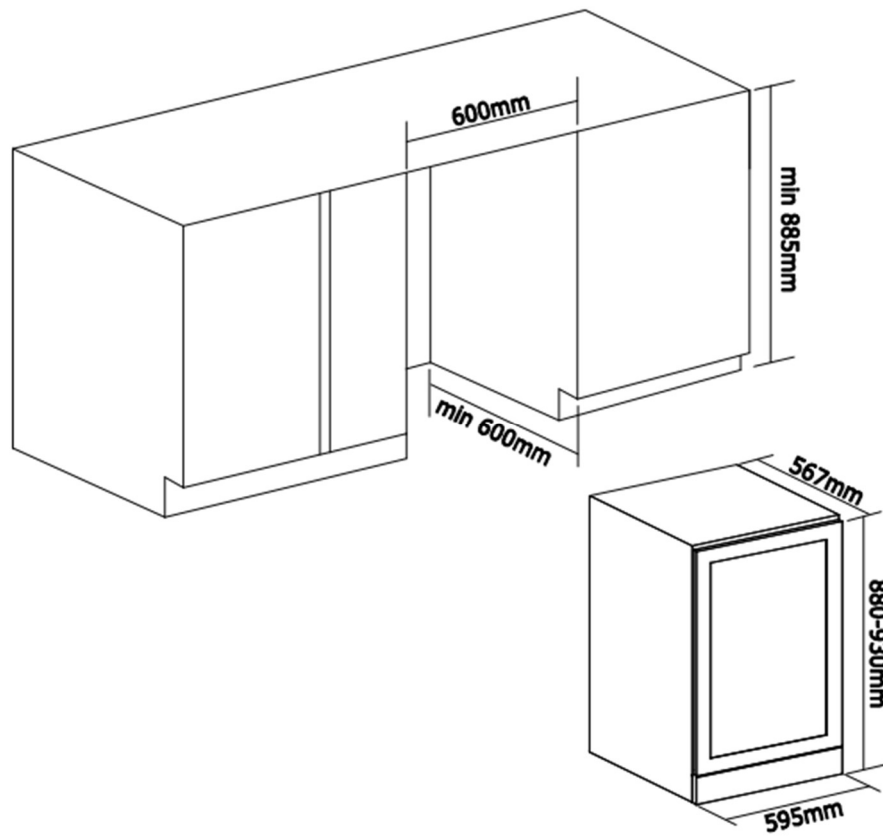


➤ INSTALLATION DRAWING

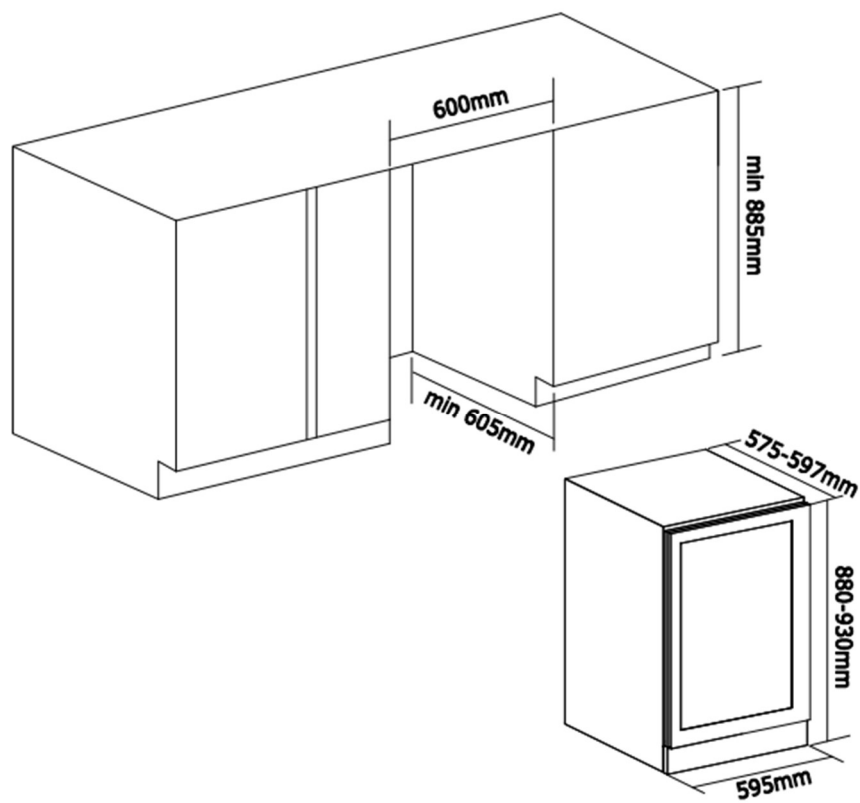
FOR DAUF-16.64DBH



FOR DAUF-41.146DOP.TO



FOR DAUF-41.146DBH

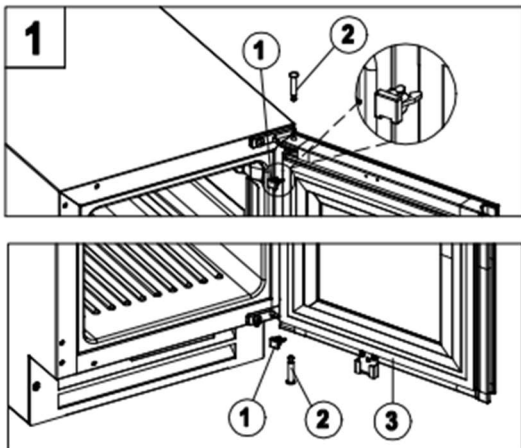


➤ Reversing the Door Swing of Your Appliance

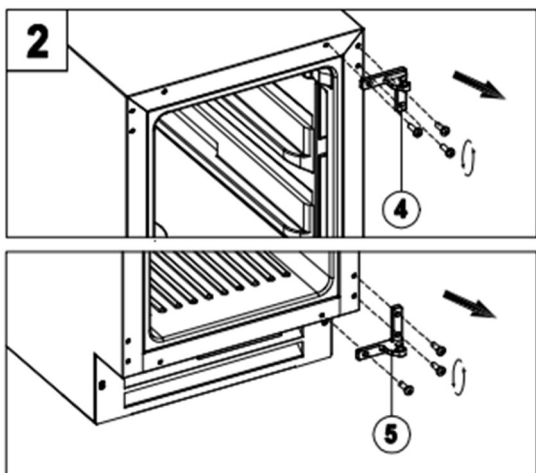
Should you desire to reverse the opening direction of the door, please follow the instructions below. Safely reversing the door swing of your appliance should require at least two people.

For DAUF-16.64DBH / DAUF-41.146DBH (for handle door opening) :

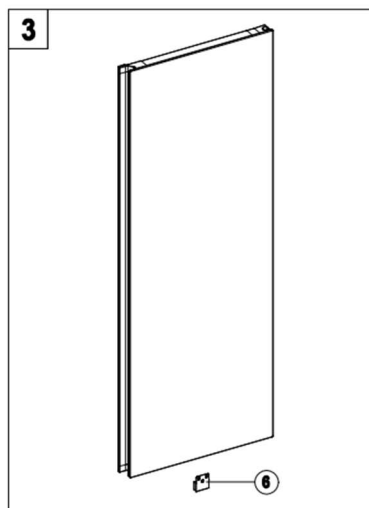
1. Remove the door axis button (1) from the top right hinge and the lower right hinge. Remove the door axis (2). Then remove the door (3).



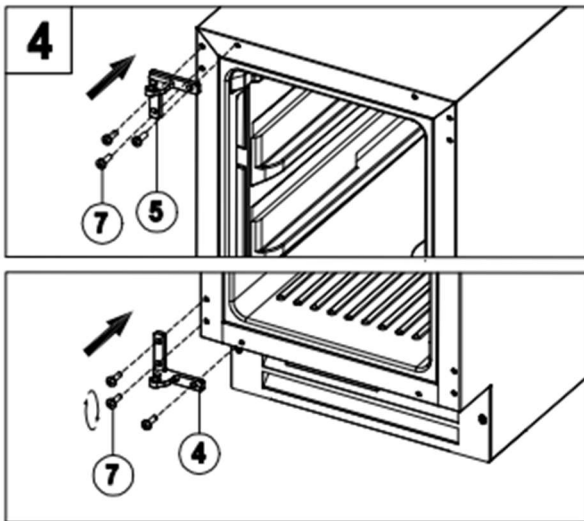
2. Unscrew 3 screws and remove the top right hinge (4), unscrew 3 screws and remove the lower right hinge (5). Then remove its.



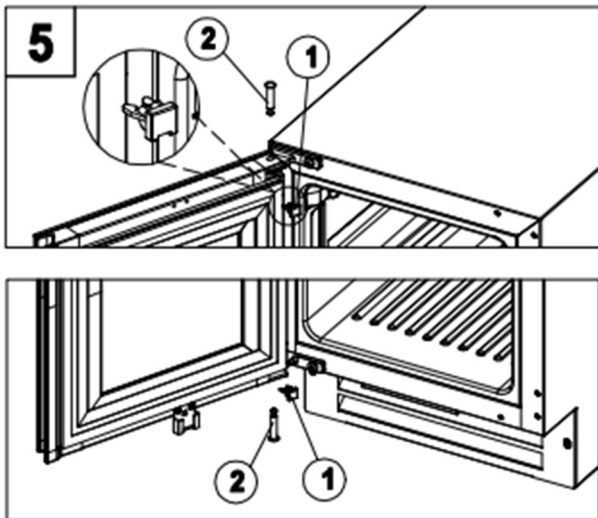
3. All located at the bottom of the door, unscrew 2 screws and remove the door magnet (6). Then, install the door magnet, child safety lock on the opposite side of the door frame. Rotate the door 180 degrees.



4. Remove the decorative nails (7) from the top left and the lower left of the cabinet. Install the decorative nails to the top right and the lower right of the cabinet . and install the top left hinge (5) and the lower left hinge (4) .

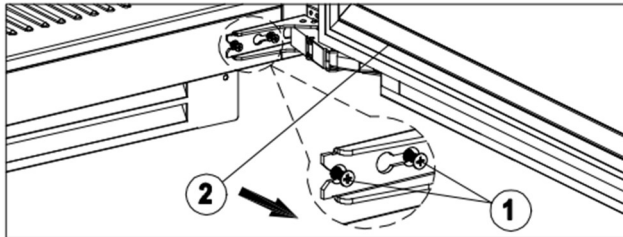
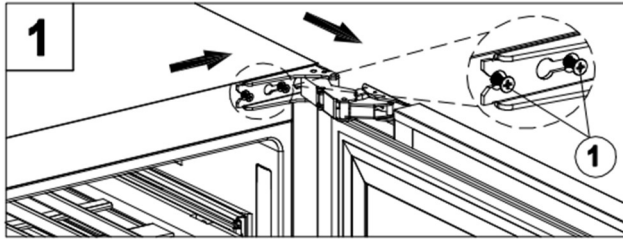


5. Install the door axis (2) and install the door once correctly aligned. Install the door axis button (1) .

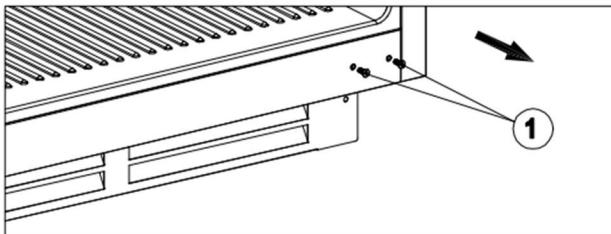
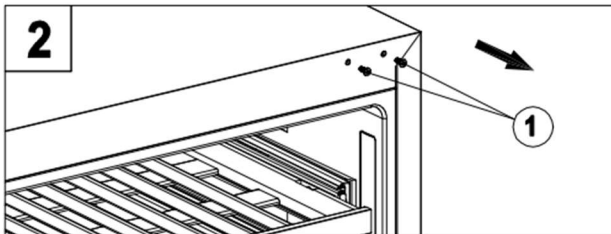


FOR DAUF-41.146DOP.TO:

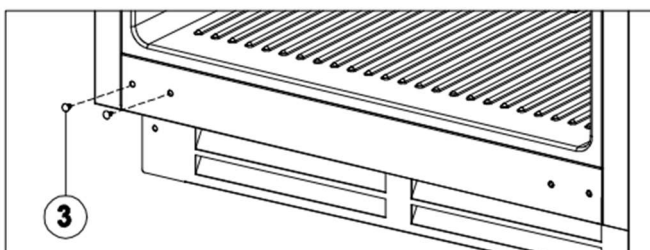
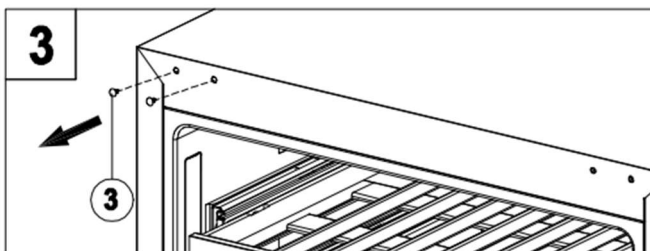
1. Loosen the screws (1) that hold the top and bottom hinges to cabinet. Remove the door (2) and leave the hinges open.



2. Remove the hinge screws.

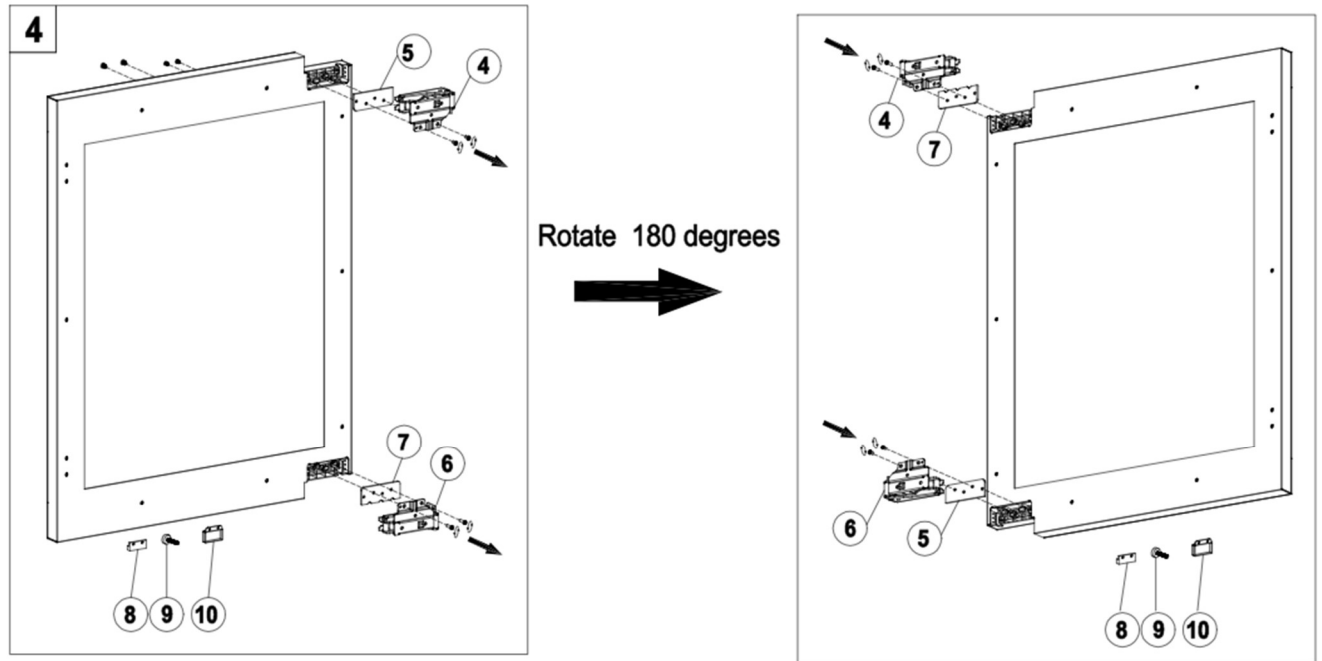


3. Remove 4 of the decorative nails (3) from both the upper and lower left corners and reinstall them to the upper and lower right corners.

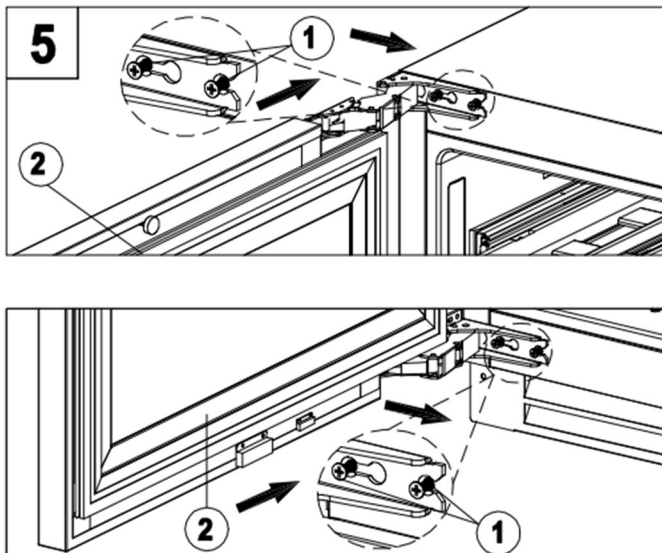


4. Remove the upper right hinge(4) and door hinge pad plate(5),
 Remove the lower right hinge(6) and door hinge pad plate(7), Rotate the door 180 degrees,
 Install (4) and (7) on the upper left of the door,
 Install (6) and (5) on the lower left of the door,

Remove the door magnet (8) and Putting box (10) by 2 screws ,
 Remove counterclockwise knob (9) , each and reinstall them to the opposite end of the door.



5. Install hinge screws (1) on the left side. Install screws only part of the way so that hinges can slide behind the screw heads. Tighten hinges screws(1) .

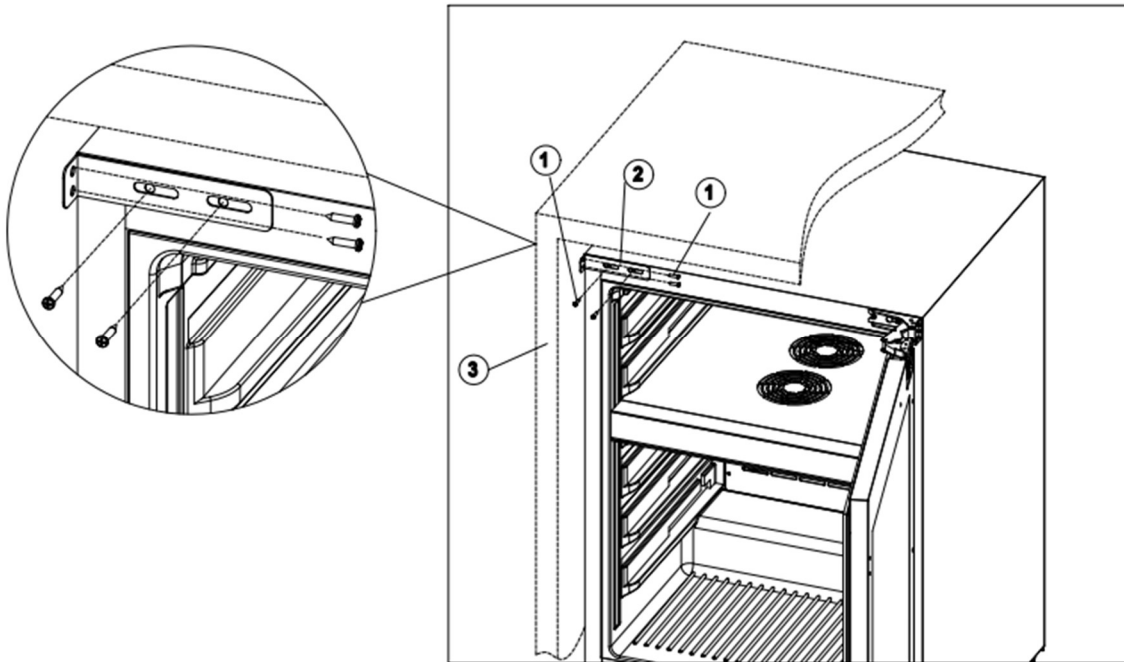


➤ INSTALLING THE FIXING BRACKET

This bracket will keep the product secure and help prevent it moving when in use.

After installing the wine cabinet, please open the door, adjust the fixing bracket and fix this into the work surface with three screws using a screwdriver.

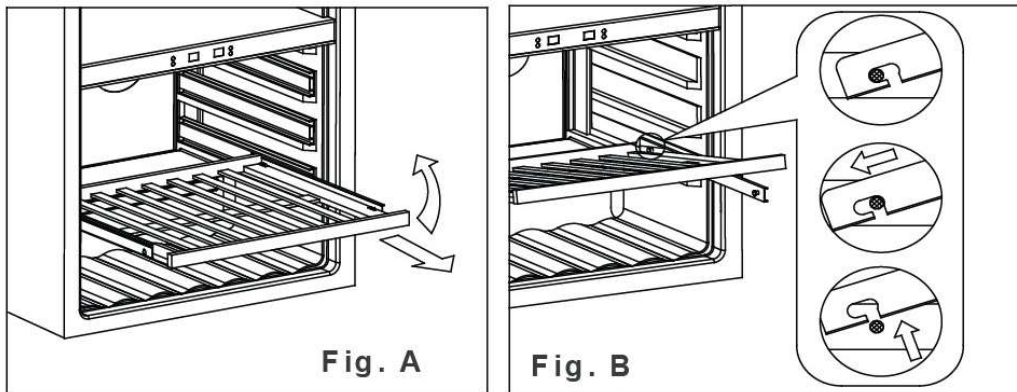
- 1.Screws
- 2.Fixing Bracket
- 3.Work Surface



➤ Shelves

FOR DAUF-41.146DOP.TO / DAUF-41.146DBH

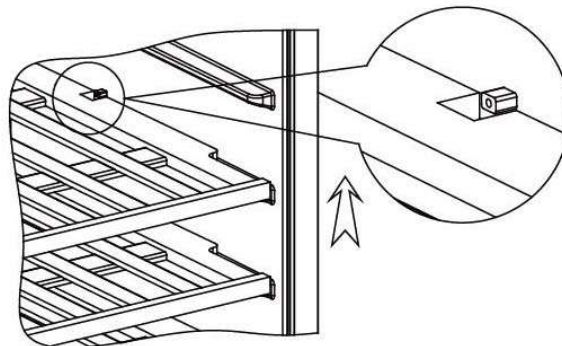
- According to the actual configuration of your product, please check the relative Remove or Replace Racks.
- To prevent damaging the door gasket, make sure to have the door all the way opened when pulling shelves out of the rail compartment.



1. Fully extend the shelf you wish to remove (Fig. A)
2. Lift the front of the shelf up (Fig. A)
3. Holding the shelf track, push the shelf in, then up to release from the rear dampers (Fig. B)

FOR DAUF-16.64DBH

- To prevent damaging the door gasket, make sure to have the door all the way opened when pulling the bottom shelf out of the rail compartment.
- For easy access to the storage content, you must pull the shelf approximately 1/2 out of the rail compartment, however this unit was designed with a plastic post on each side of the shelf track to prevent bottles from falling.
- When removing the shelf out of the inner rail, make sure to remove all items first. Then move the shelf to the position where the notch of shelf is exactly under the plastic post and lift the shelf. In order to replace the shelf, repeat steps described above in reverse.



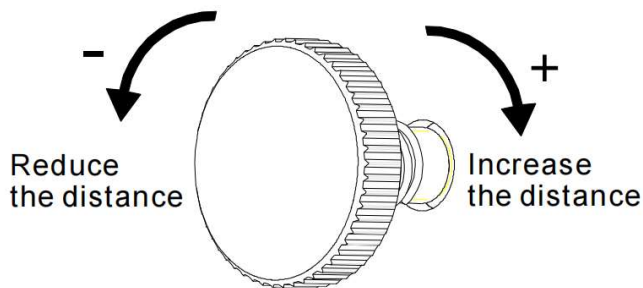
➤ Automatic door opening function (Only for DAUF-41.146DOP.TO)

When the door is closed, press 2-3 seconds on the **upper part of the door or lower** part of the door, after which the push rod starts and sticks out, and the door opens automatically, and then the push rod automatically retracts. After two seconds, the door can be closed manually.

How to adjust the push door

The automatic door opening function works by pressing the switch in front of the cabinet through the knob on the door to trigger the opening action. The door clearance may change due to vibration and other factors in transit, it causes the automatic door opening function to be insensitive or cannot be used normally. Please check the distance between the knob and the switch in the door closed state and adjust to the most appropriate distance by rotating the knob.

1. The door opens automatically after power on, it indicates the distance between the knob and the switch is too close.
2. There is no response even press the door harder; it indicates the distance between the knob and the switch is too far.
3. The door is opening automatically even with gently touch, it indicates the distance between the knob and the switch is too close.



Adjusting knob

Please adjust the knob on the basis of the 1/4 circle in the above cases: rotate to the left, the knob is extended out of the door frame; rotated to the right, the knob is retracted into the door frame.

CARE & MAINTENANCE

Clean your Wine Cooler

- Turn off the power, unplug the appliance, and remove all items including shelves and rack.
- Wash the inside surfaces with warm water and mild solution.
- Wash the shelves with a mild detergent solution.
- Wring excess water out of the sponge or cloth when cleaning area of the controls, or any electrical parts.
- Wash the outside cabinet with warm water and mild liquid detergent. Rinse well and wipe dry with a clean, soft cloth.
- Defrost the unit every 6 months

Defrosting process

To defrost the appliance:

- 1, Switch off the appliance
- 2, Remove the bottles from the appliance
- 3, Leave the door open to speed up the process
- 4, Place towels at the door opening of the appliance to absorb any water.

Defrosting usually takes 2-4 hours. The appliance is defrosted when all the frost from the evaporator is gone.

- 5, Switch the appliance back on
- 6, If present, refill the humidity box

➤ Power failure

- Most power failures are corrected within a few hours and should not affect the temperature of your appliance if you minimize the number of times the door is opened. If the power is going to be off for a long period of time, you need to take the proper steps to protect your contents.

➤ Vacation Time

- Short vacations: Leave the Wine Cooler/Beverage Cooler operating during vacations of less than three weeks.
- If the appliance is not used for several months, remove all items and turn off the appliance. Clean and dry the interior thoroughly. To prevent odor and mold growth, leave the door open slightly: block it open if necessary.

➤ Moving your Wine Cooler/Beverage Cooler:

- Remove all the items.
- Take out the loose items inside the wine cooler/Beverage Cooler (such as shelf), or fix the loose items with the foam.
- Turn the adjustable leg up to the base to avoid damage.
- Tape the door shut.
- Be sure the appliance stays secure in the upright position during transportation. Also protect outside of appliance with a blanket or similar items.

➤ Energy saving tips

- The Wine Cooler/Beverage Cooler should be located in the coolest area of the room, away from producing appliances, and out of direct sunlight.

Problems with your Wine Cooler/Beverage Cooler


You can solve many common Wine Cooler/Beverage Cooler problems easily, saving you the cost of a possible service call. Try the suggestions below to see if you solve the problem before calling the service.

Troubleshooting Guide

Problem	Possible Cause
Wine Cooler/Beverage Cooler does not operate	Not plugged in. The appliance is turned off. The circuit breaker tripped or a blown fuse.
Wine Cooler/Beverage Cooler is not cold enough	Check the temperature control setting. External environment may require a higher setting. The door is open too often. The door is not closed completely. The door gasket does not seal properly.
Turns on and off frequently	The room temperature is hotter than normal. Overload of the cabinet The door is open too often. The door is not closed completely. The temperature control is not set correctly. The door gasket does not seal properly.
The light does not work	Not plugged in. The circuit breaker tripped or a blown fuse. The bulb has burned out. The light button is "OFF"
Vibrations	check to sure that the Wine Cooler/Beverage Cooler is level.
Too much noise	The rattling noise may come from the flow of the refrigerant, which is normal. As each cycle ends, you may hear gurgling. Contraction and expansion of the inside walls may cause popping and crackling noises. The Wine Cooler/Beverage Cooler is not level.
The door will not close properly	The Wine Cooler/Beverage Cooler is not level. The door was reversed and not properly installed. The gasket is dirty. The shelves are out of position.

Before disposal of the appliance.

1. Disconnect the main plug from the main socket.
2. Cut off the main cable and discard it.

	Correct disposal of this product
	<p>This symbol on the product, or in its packaging, indicates that this product may not be treated as household waste. Instead, it should be taken to the appropriate waste collection point for the recycling of electrical and electronic equipment. By ensuring this product is disposed of correctly, you will help prevent potential negative consequences for the environment and human health, which could otherwise be caused by the inappropriate waste handling of this product. For more detailed information about the recycling of this product, please contact your local council, your household waste disposal service, or the shop where you purchased the product.</p>

WARRANTY

This product comes with a warranty period of 3 years. You can extend the warranty of your compressor up to 5 years if you register your appliance via the following link: dunavox.com/product-registration

The warranty does not cover:

- Damage in transit or when moving the appliance.
- Any damage to the glass door is not covered under the warranty
- Any damages caused from negligence, accident, improper use, improper installation/service or use for purposes other than those described in the instruction manual.
- Damage caused by connecting your product to the wrong power source.
- Damage from power failure.
- Faulty installation or modification made during installation.
- Damage caused by unauthorized repair.
- Any damages resulting from force majeure, fire disaster or natural disaster.
- Alterations to the product without express permission from the manufacturer.
- Parts such as light, removable shelves, handles or plastic.
- Any spoilage or damage to wines or any other contents incidental or consequential to possible defects of the unit.

The warranty clauses and specifications are subject to change without notice.